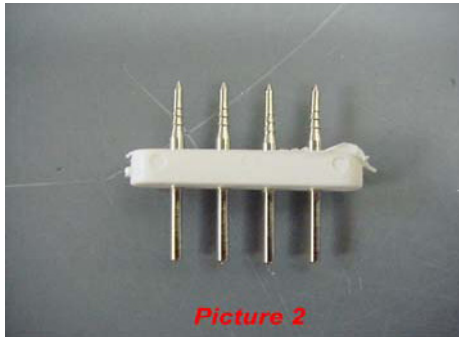
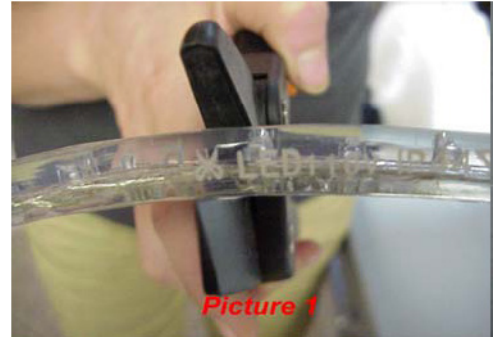




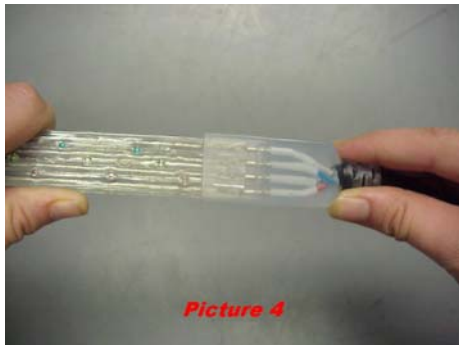
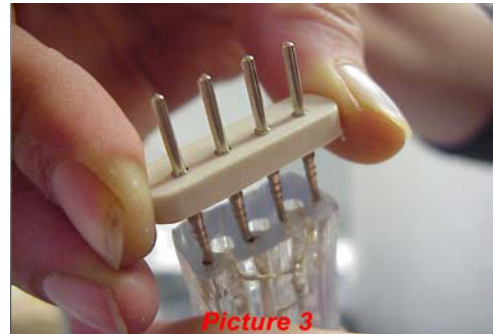
LED RGB Flat Rope Instructions

Here are a few tips you need to know about the RGB flat rope. The rope itself is rated IP44 but the connections ARE NOT waterproof. There are marked cutting points on the rope every 1 Meter (3.25ft). You MUST cut at the cutting points! We use an anvil type garden cutter for this. (Picture 1)



To connect the rope to the controller you will need to use the 4 pin connector. (Picture 2)

Make sure that the pointy pins line up with the wires in RGB Flat rope. (Picture 3)



Then plug in the 4 pins into the power cord clear connector. You'll notice the pins only fit one way, but if you do have the pins lined up and you don't have any power to the rope, try the other end. (Only one end will work) (Picture 4)

Plug the other end of the power cord connector cable into the appropriate cord on your controller. Again, the pins only fit one way. You'll see a little "key" sticking down on the power cord connector cable that fits into the "keyhole" on the other cord from your controller. It fits only one way, so be careful when you do this. (Picture 5)

